

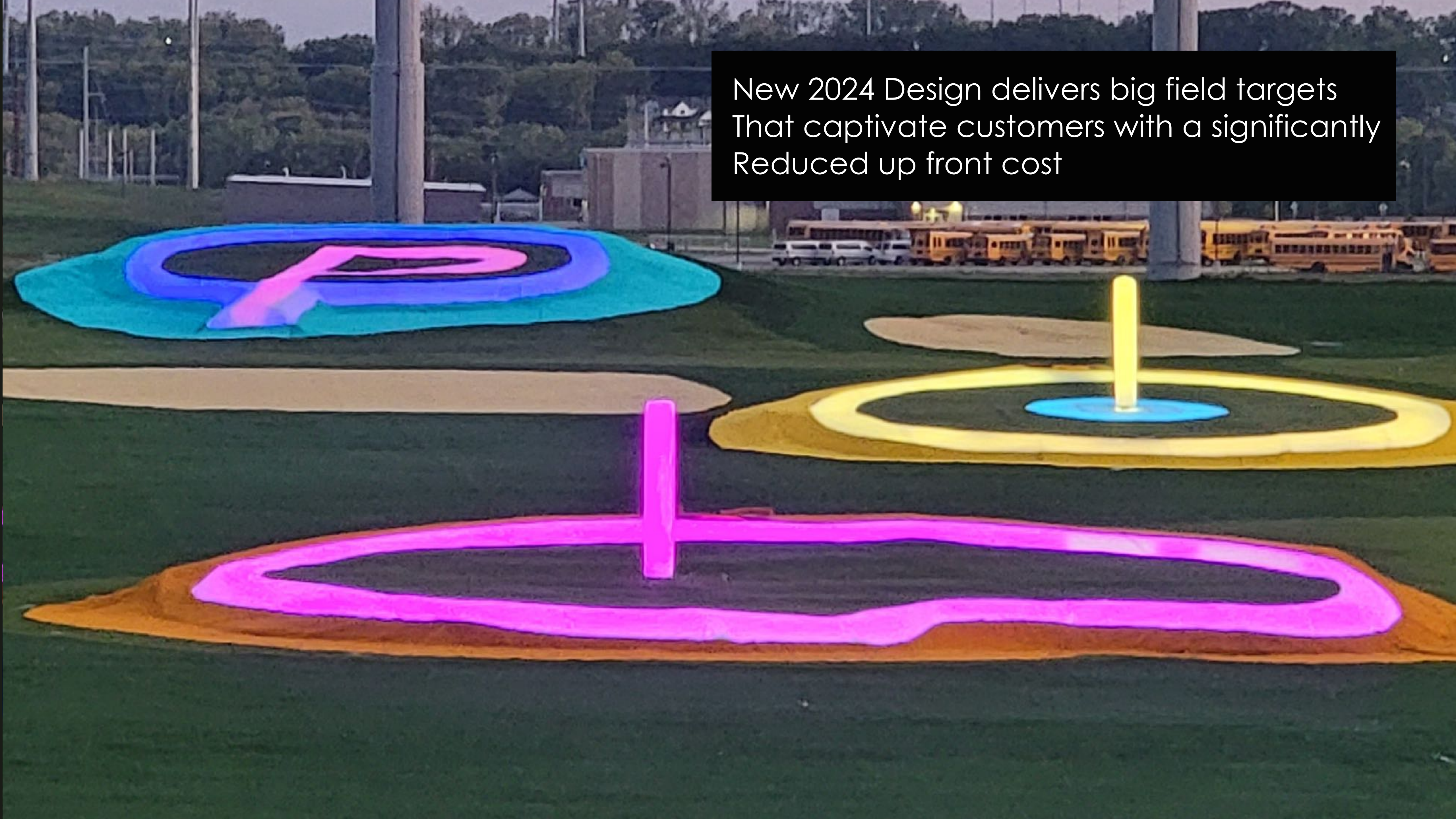
SMART TARGET GOLF



THE FIELD IS THE FUTURE



New 2024 Design delivers big field targets
That captivate customers with a significantly
Reduced up front cost





MONETIZE THE NIGHT

GENERATE \$90K PER BAY ANNUALLY

Smart Targets & scoring combine to generate up to \$90k per bay, per year in bay rentals alone. Smart Targets are compatible with every tee line scoring and gaming system on the market. Combine with Toptracer and you have the complete Target to Tee Box immersive experience that keeps evening golfers all night long... and data proves it.

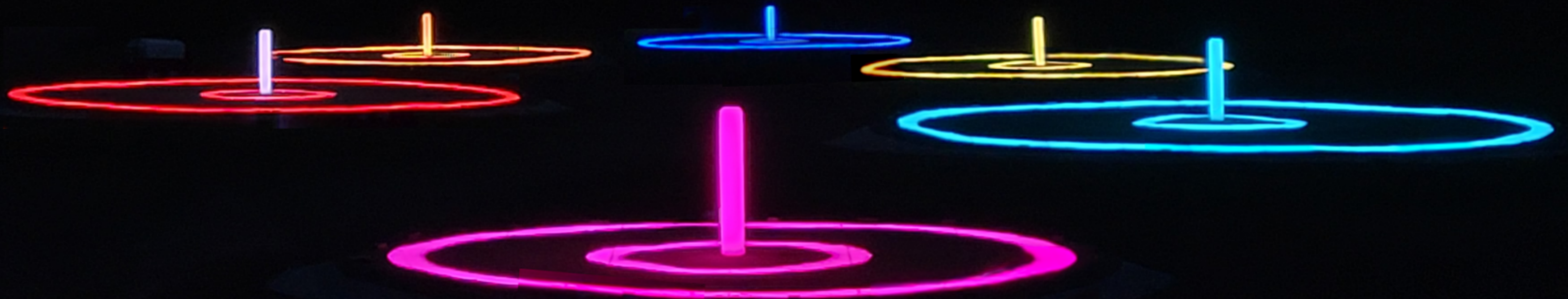
TARGETS IGNITE YOUR BUSINESS

Smart Target fields do not just explode your bay rentals. They create the activity anchor that can shoulder a restaurant and multiple new revenues streams that daytime practice or kiosk scoring alone cannot match

SMART TARGETS WORK

All of our 16 venues are able to support a 20 table restaurant

- We quadruple revenue per bay hour
- We double your occupancy rate
- We generate party buyouts
- We generate corporate buyouts
- We replace daytime company functions



INSTAGRAM IS EVERYTHING

The right field composition allows your customers will shoot amazing shots that will become your bread and butter marketing because after all, no one instagrams a kiosk, but they shoot the tee shot. We make it a memorable one.

**YOUR FIELD IS YOUR
ADVERTISING**



An aerial night photograph of a golf course. Several circular targets are illuminated on the grass with glowing rings and a central vertical pole. The targets have different colored borders: yellow, red, green, and purple. In the background, a large, brightly lit clubhouse or restaurant is visible, with a crowd of people inside. A body of water is on the left, and a parking lot with cars is on the right.

LIVE VENUES HAVE AN ADVANTAGE

“YOU HAVE TO SEE THIS”

We make fields that give your venue it's own signature and customers a reason to spread the word because seeing it live will make you a believer

MICROSITE SUCCESS

Small market venues with 10-30 bays can become highly attractive day and evening hot spots that provide enough sizzle to be the venues anchor and make possible multiple revenue streams that support the venues continued vitality

NIGHT TIME REVENUE STREAMS

- Bay rentals
- Bay Food & Beverage
- Restaurant Food & Beverage
- Party buy outs and rentals
- Car bubble sponsorship
- Field sponsorship

Southern Dunes
Haines City, FL

FROM CONCEPT TO COMPLETION

Every field brings with it unique opportunities and challenges.
From design to installation, we bring good ideas to life

Caption

PINSEEKERS
Tiffin, IA



TARGET TECH 2024

US PATENTS
10,232,241
#10,695,635
#11,285,373

TARGET ELECTRONICS AND CONTROL SYSTEM

LIGHTS AND SENSORS

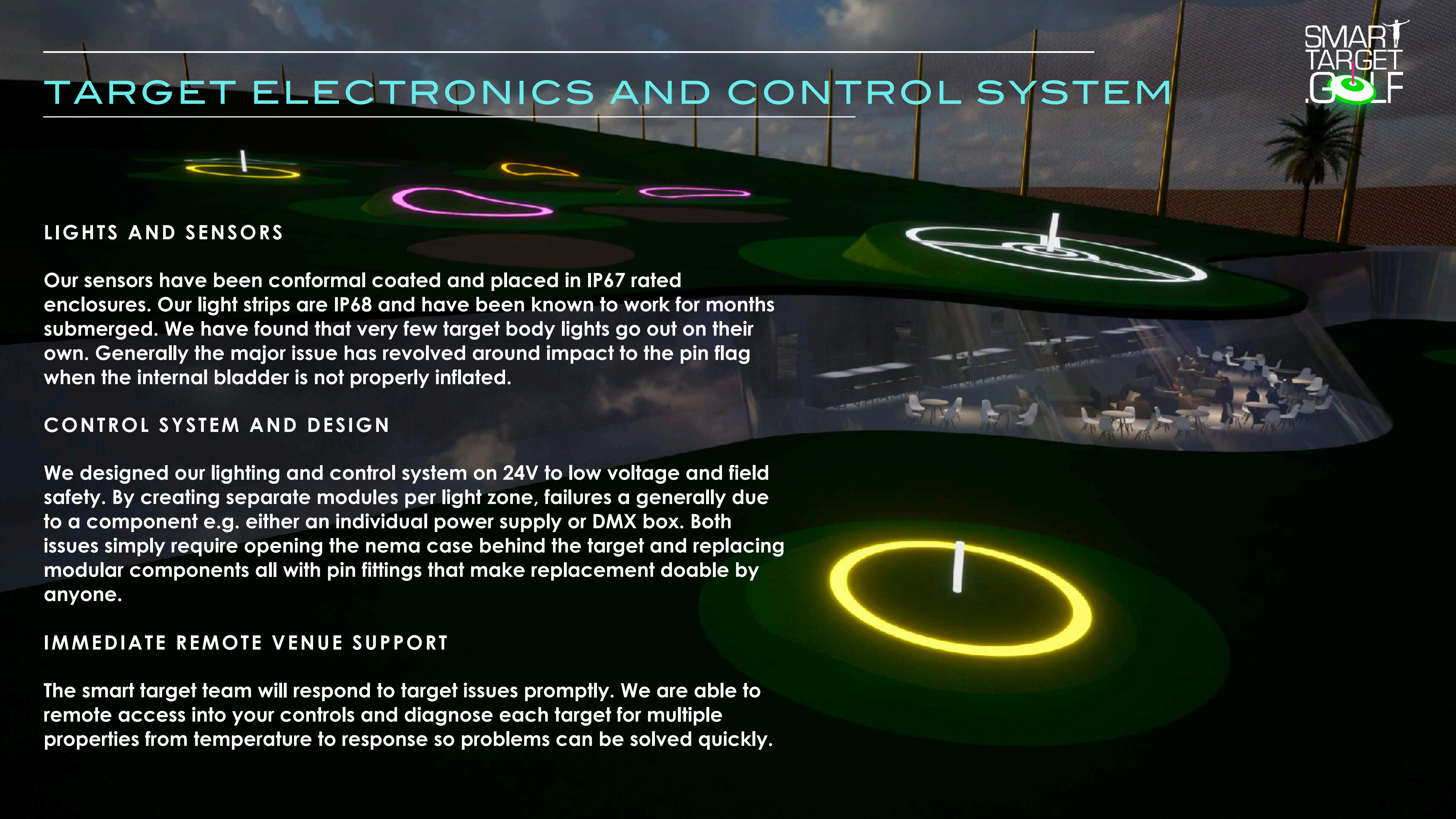
Our sensors have been conformal coated and placed in IP67 rated enclosures. Our light strips are IP68 and have been known to work for months submerged. We have found that very few target body lights go out on their own. Generally the major issue has revolved around impact to the pin flag when the internal bladder is not properly inflated.

CONTROL SYSTEM AND DESIGN

We designed our lighting and control system on 24V to low voltage and field safety. By creating separate modules per light zone, failures are generally due to a component e.g. either an individual power supply or DMX box. Both issues simply require opening the nema case behind the target and replacing modular components all with pin fittings that make replacement doable by anyone.

IMMEDIATE REMOTE VENUE SUPPORT

The smart target team will respond to target issues promptly. We are able to remote access into your controls and diagnose each target for multiple properties from temperature to response so problems can be solved quickly.



CONTROL THE FIELD FROM THE CLUB HOUSE



- System program provided on PC laptop or rack blade
- Control light and sound
- System runs on a private wireless mesh network
- System online for remote field support
- System checks for health of each target

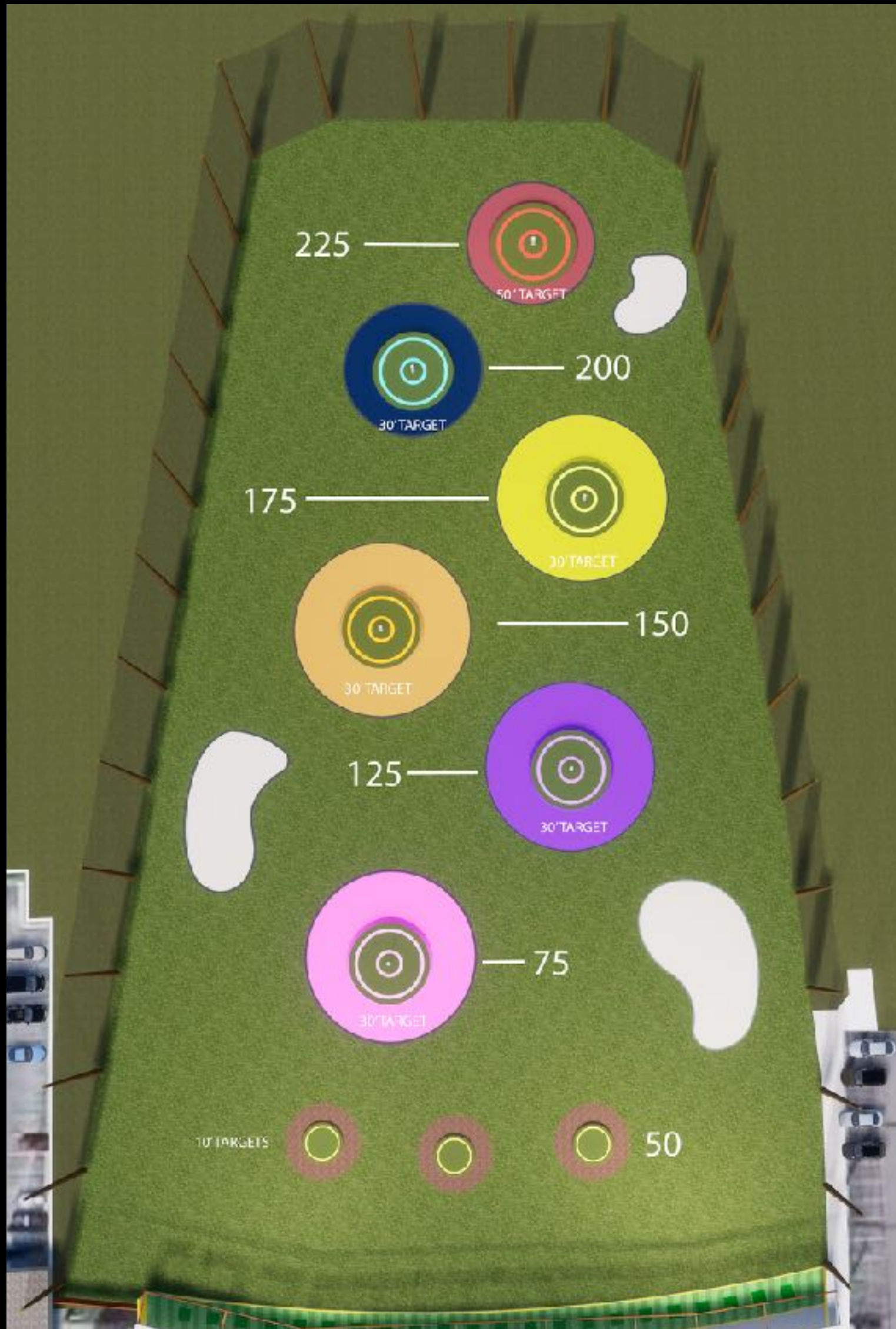
ALL SMART TARGETS communicate through a wireless mesh network that you can control from a laptop at the tee line. Change the light and sound on the fly for mobile or permanent targets.



THE BUILD - FIELD OF SENSORS

Smart Targets are made with a patented system that turns the entire target into a giant sensor. They are built to have single or multiple sensor zones as well as any custom shape of green.

Permanent Smart targets are designed to withstand all types of weather conditions from summer humidity to prolonged snow and cold. Targets are designed with two primary methods depending on weather and ground conditions of the venue



TARGET CONSTRUCTION AND DESIGN

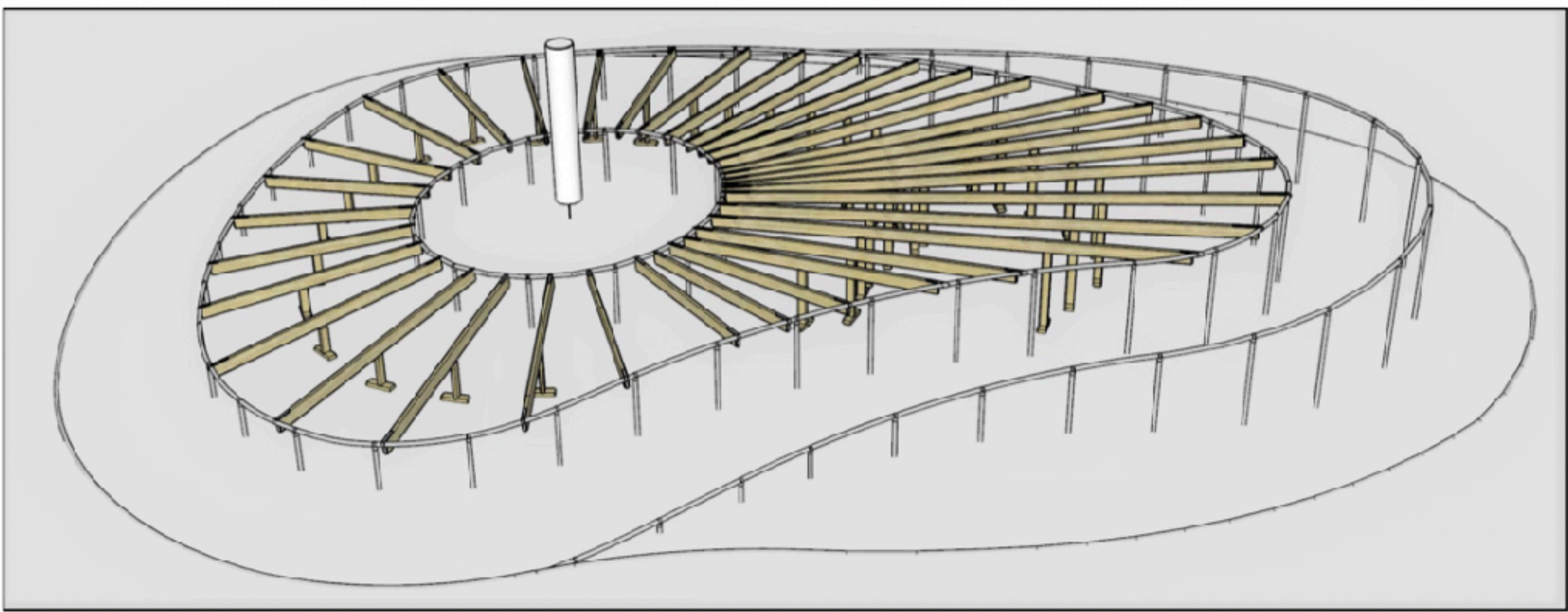
- METAL FRAME -

ABOVE GROUND TARGET AND GREEN DESIGN

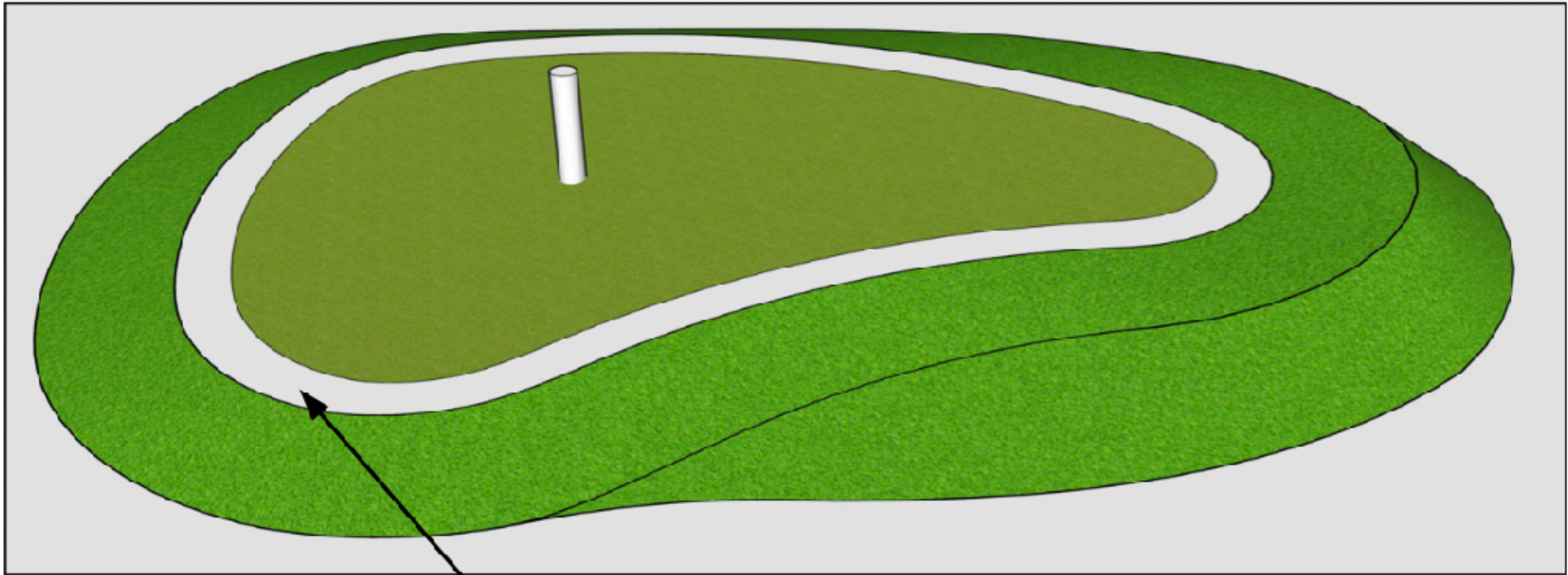
Above ground structures create a durable weatherproof structure because the inside is dry and thus protects all vital electronics and sensors

Metal frame construction ensures long life while allowing us to create custom field targets of any size, angle and shape.

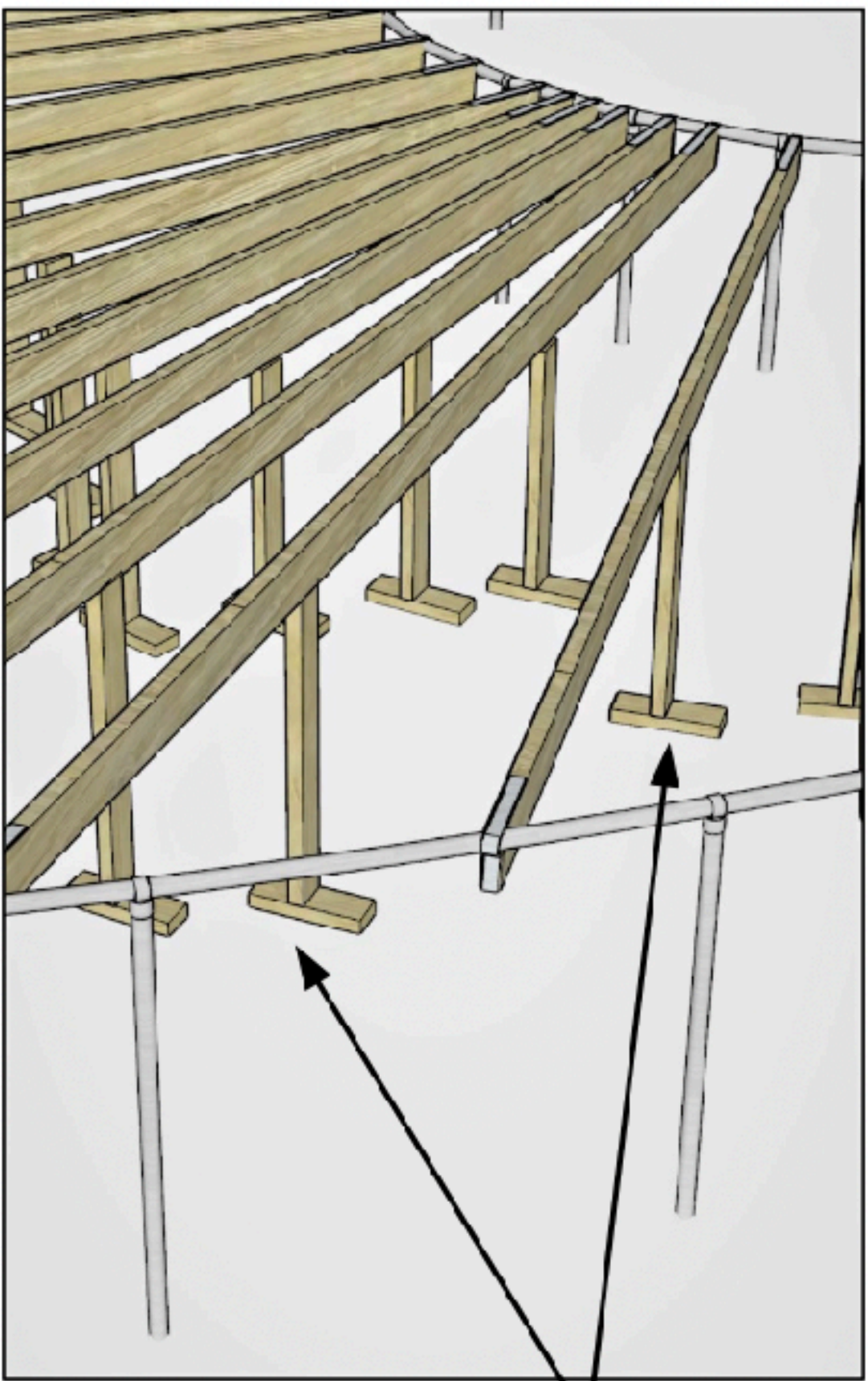
Above ground targets save venues by eliminating virtually all ground work except running electrical. This savings can be substantial depending on size of targets.



PIPE AND FRAMING WITH JOISTS AND 2X4 JOIST SUPPORT. 1 (2) SUPPORTS FOR LONGER RUNS AS NEEDED



24" WIDE PERIMETER LIGHT CHANNEL



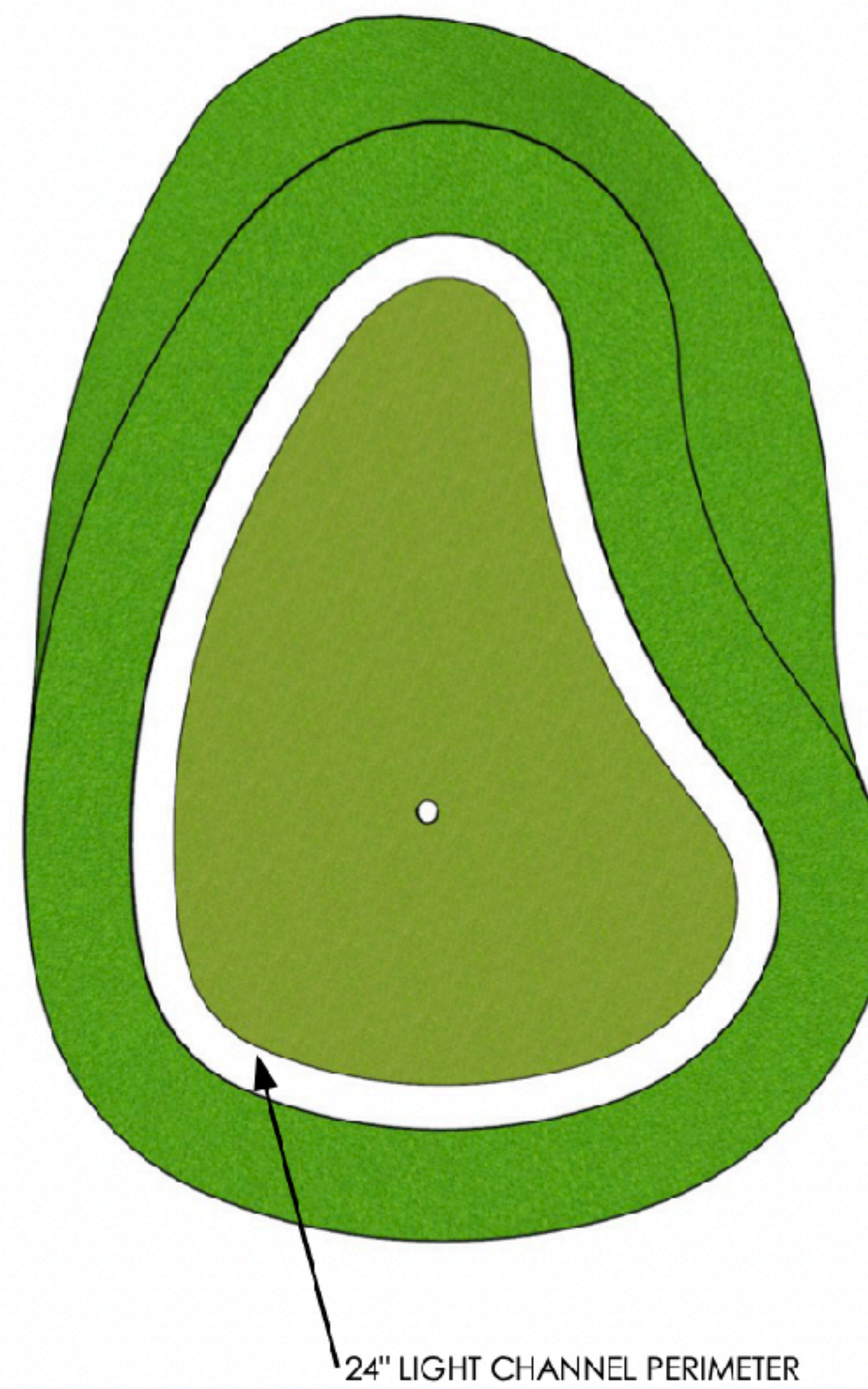
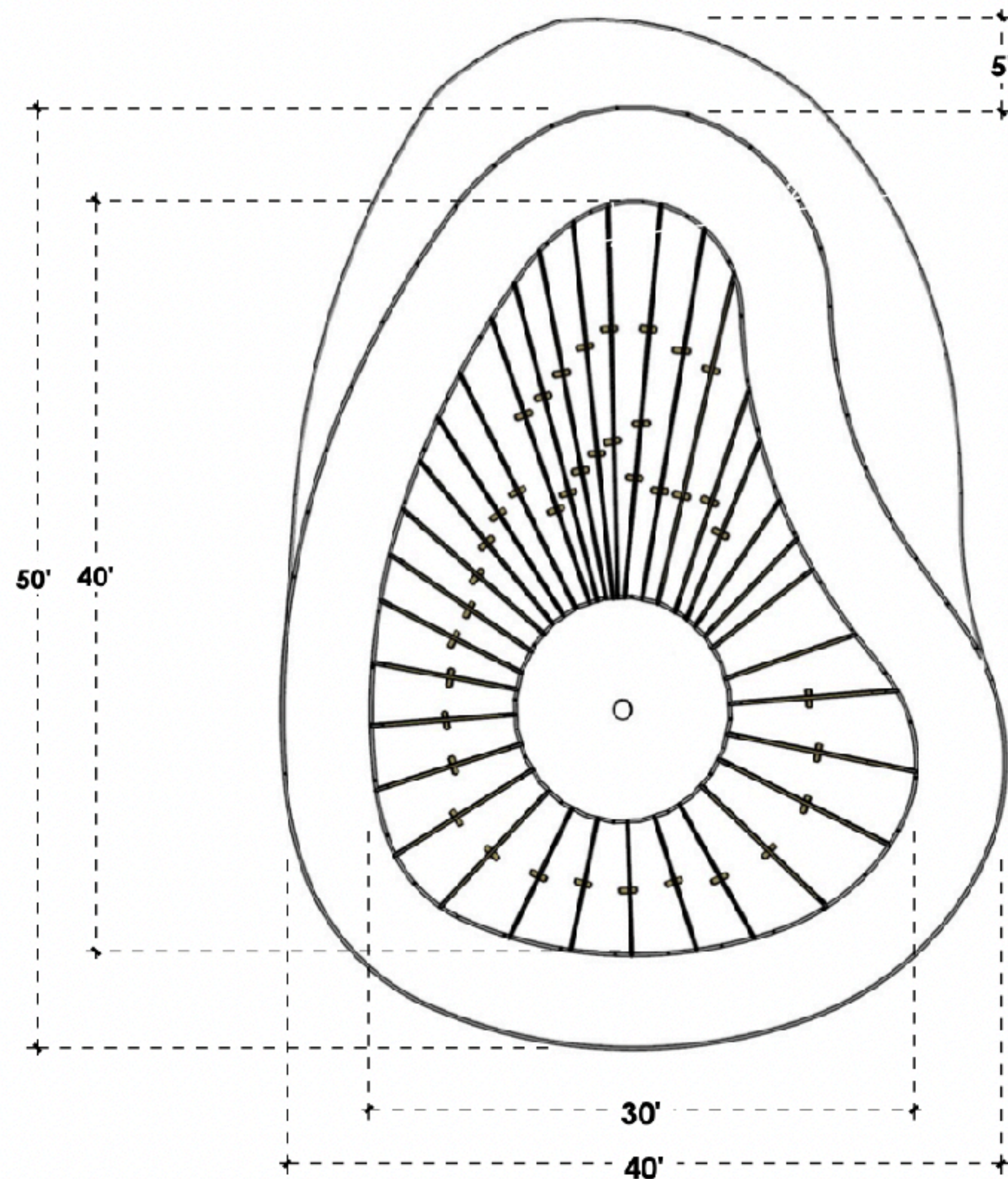
2X4 DEADMAN SUPPORTS

TARGET CUSTOMIZATION

Target structures can be made in virtually any size and shape.

All targets are covered with a putting grade turf with a polypropylene backer for long life and durability.

Colored fringe: Target body turf and fringe color can be the same color or different, depending on your venue objectives. Many venues want a colored fringe to tie in with their tee line scoring game.



PLAN VIEW

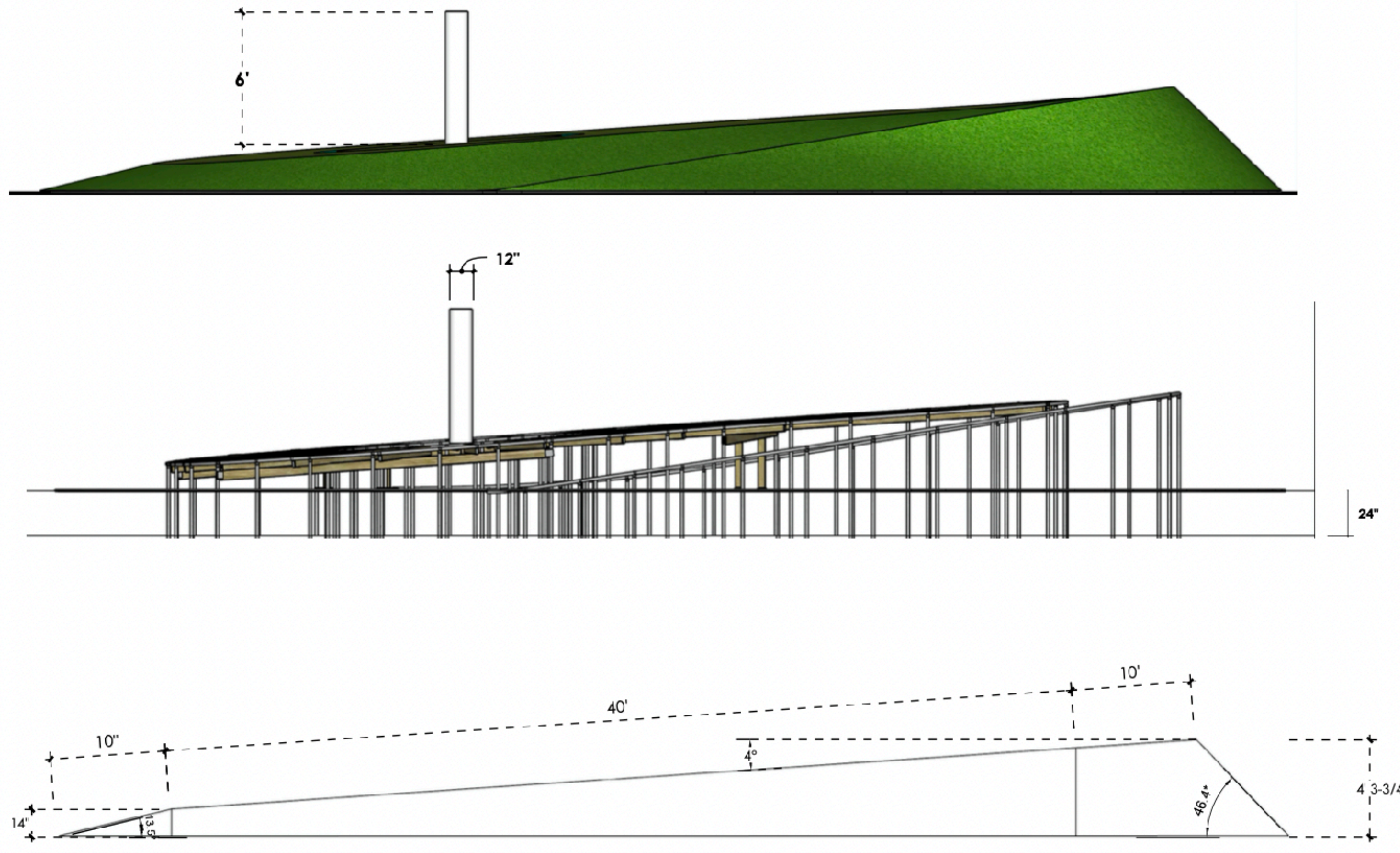
TARGET ANGLE, WEATHER AND RUN OFF

Snow load and flow of water from precipitation are critical elements taken into consideration when determining the optimum angle for each target.

To determine the proper angle a smart target team will laser level the targets with the field to create a precise target angle and modularized installation.

Note that target angle is more important for water run off than visual impact.

With this design we are able to angle both light channels and target to make sure customers see a bold, bright target with no 'thin spots' of light.



50' TARGET

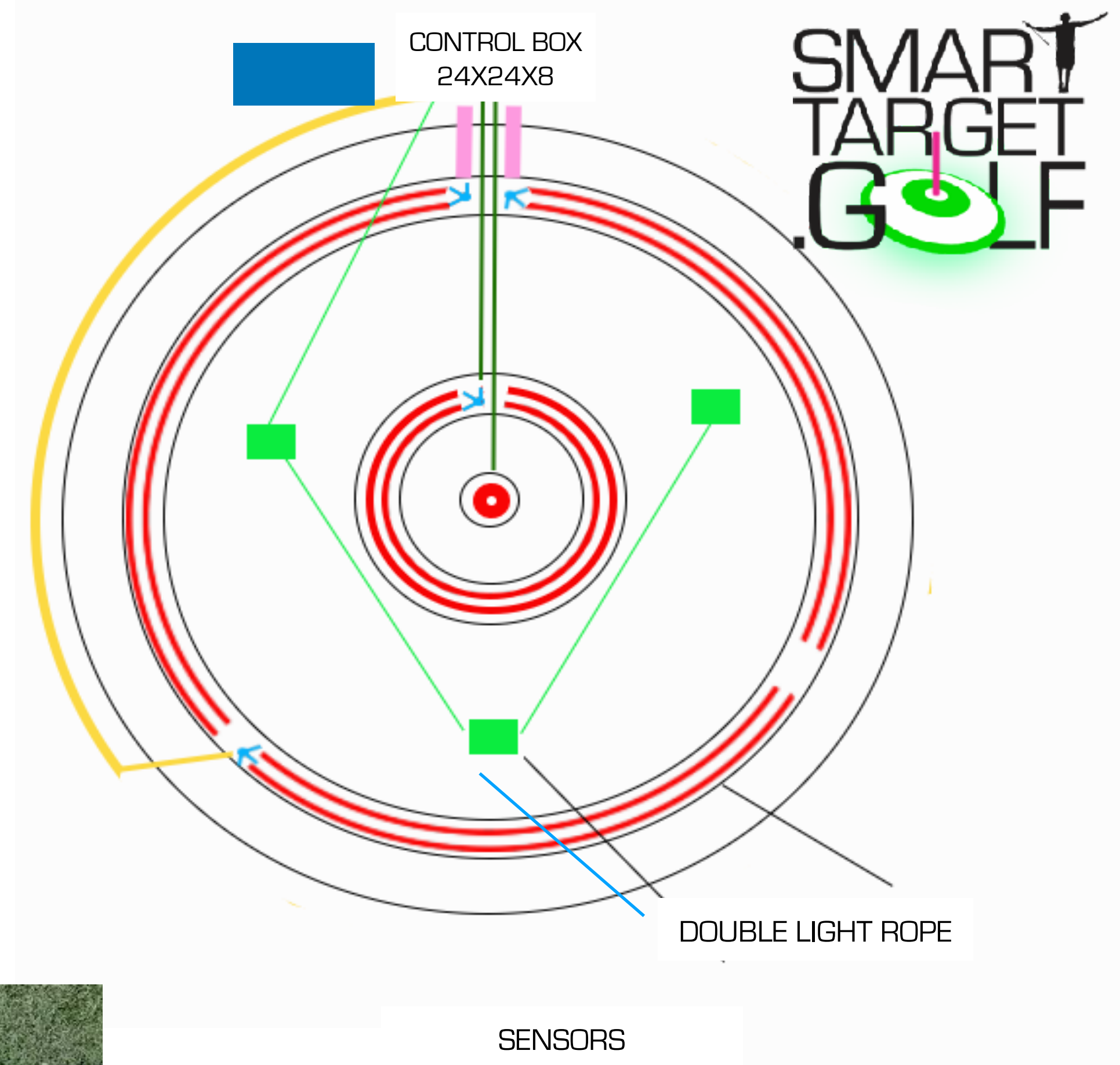
50' TARGET

FIELD ELECTRICAL

- Target field is based on 24Watt system from 110V ground power
- 30ft targets draw approximately 1,400watts of a continuous load (generally running for 4-7 hours per day)
- 50ft targets draw 1,800watts
- Each target requires a 20 amp circuit because of it's continuous load. Note the drop down that will occur over 200yds
- Field 110V power is run to the back of each target and terminated at the target control boxes, which are placed behind each target (24"x24" metal Nema case placed on side and on top of cinder block base for proper insulation)
- Electric can be run down the field with pigtails running off a single line or run power from one target to the next

30ft TARGET WIRING DIAGRAM

- 9 Light strips
- 3 Sensors
- 1 Control box
- 1 Center pin flag



TARGET CONTROL BOX



TARGET CONTROL BOX - Each target has a 24" x 24" metal Nema case recessed behind each target. This waterproof case holds all vital controls for the targets. 110v power is run by venue to each target. Our system is a low voltage 24V system. Most all system issues with lighting will happen in this box. We designed system to have from 3-7 separate quadrants so that no single target can fail and the system cannot uniformly fail unless power is cut to the field. All components are IP68 and modular for easy switch outs.



Steel frame construction creates open air interior for added reliability and access for maintenance



Hard shell polycarbonate serves as 'roof' for water, light transmission and protective shell against millions of golf ball impacts



Optical fringe with turf top creates a daytime appeal and bright evening impact

SOUTHERN DUNES - Haines City, FL - 8 bays -TopTracer & 5 Targets



5 Target field with perimeter lighting of targets around fringe

This is the perfect field size for small club or town. Just outside of Orlando and nestled in the heart of Florida hurricane country, we designed this 5 target 'Christmas Tree' layout to be able to wow the customer while being aerodynamic enough to withstand the worst.

This small field design of 5 30ft targets made with synthetic turf was designed to fit a 10 bay Toptracer range. With two new front targets.



Stacked view designed to garner customer instagrams



The low profile 14" high frames design suits the potential high winds of Florida hurricanes

TARGET SKIN CONSTRUCTION

The key to a professionally made target is to build on a clean flat surface so as to create a target that transmits the light without blemishes caused by construction in the field and on an uneven surface. This can be done on location or remotely.



Turf ready for application to optical vinyl base



50ft Skins ready for turfing



2 - 30ft Target skins complete without fringe



50ft target being skinned

TARGET CONSTRUCTION AND DESIGN

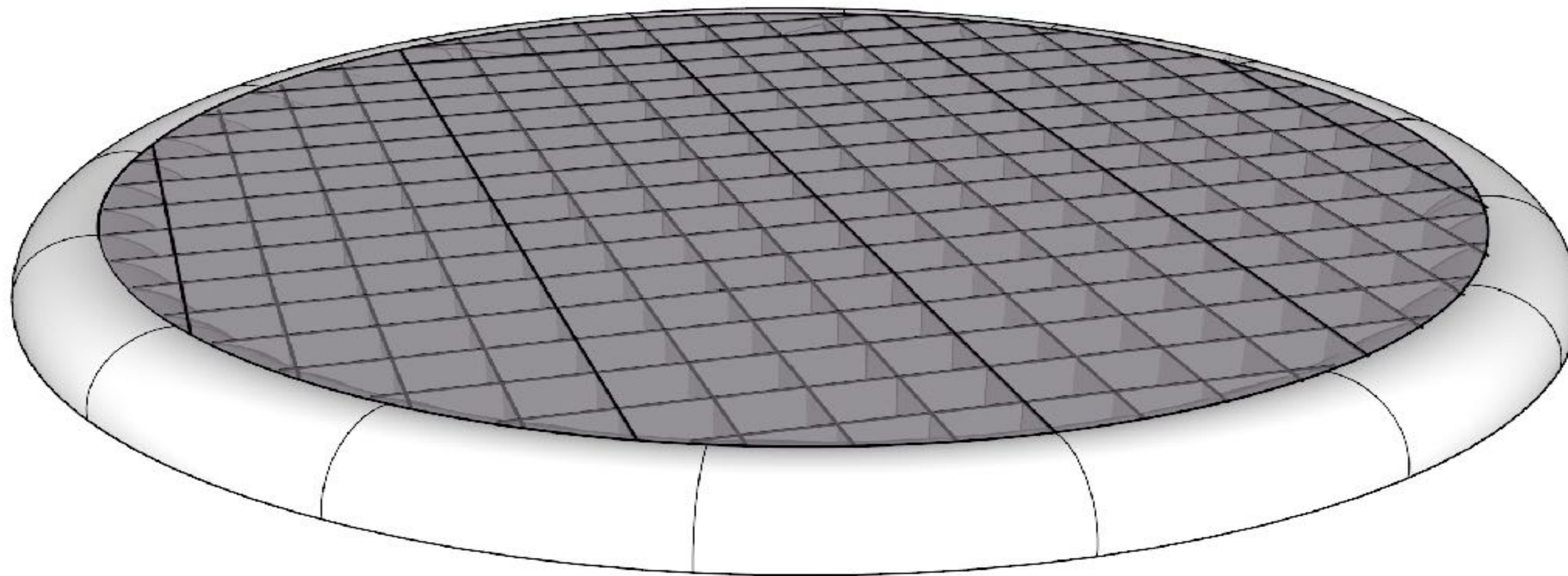
NEW FOR 2024
POLYCARBONATE

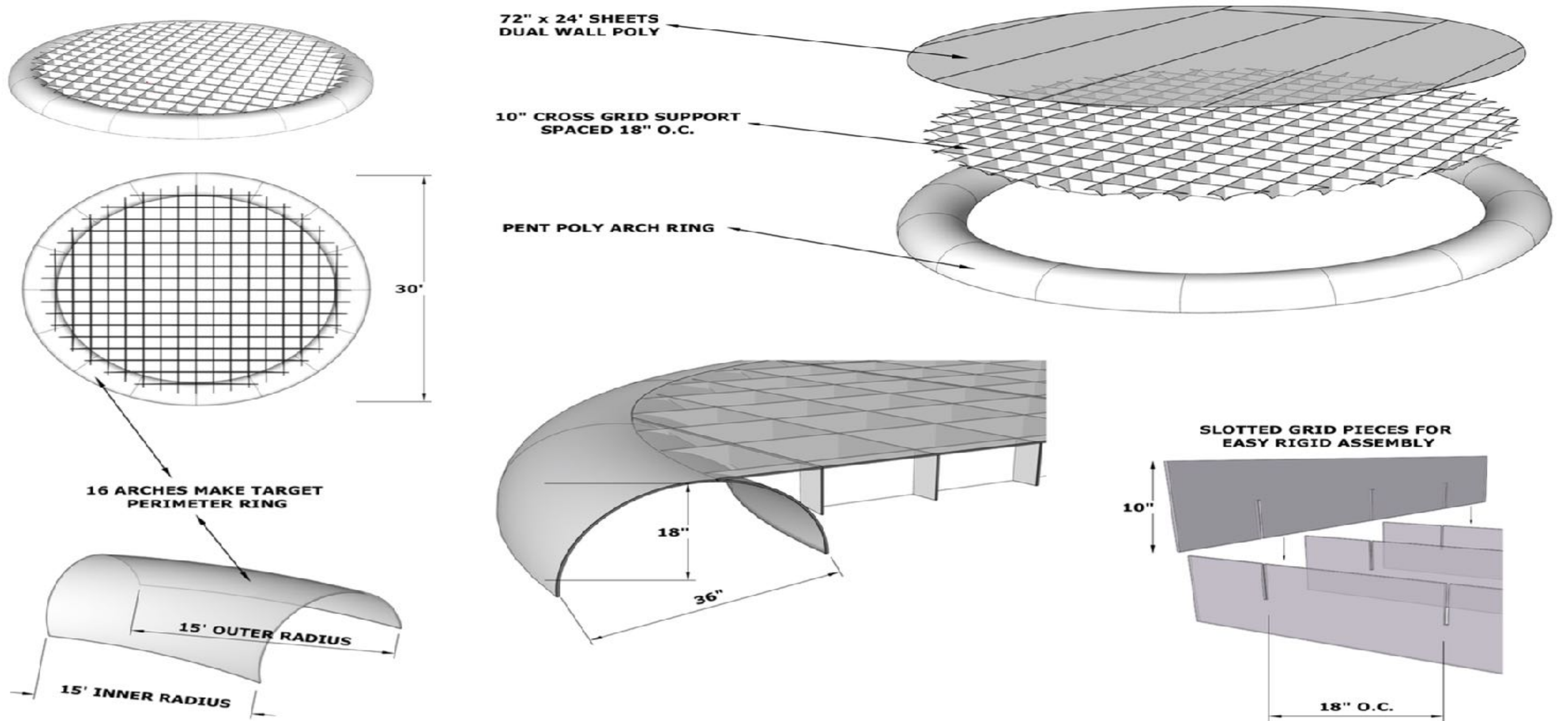


Scaleable target that are assembled and not built

With pure polycarbonate structures venues now get reduced installation cost combined with all weather durability because nothing gets rust or warped from weather.

Poly targets are great for all weather conditions and all size ranges





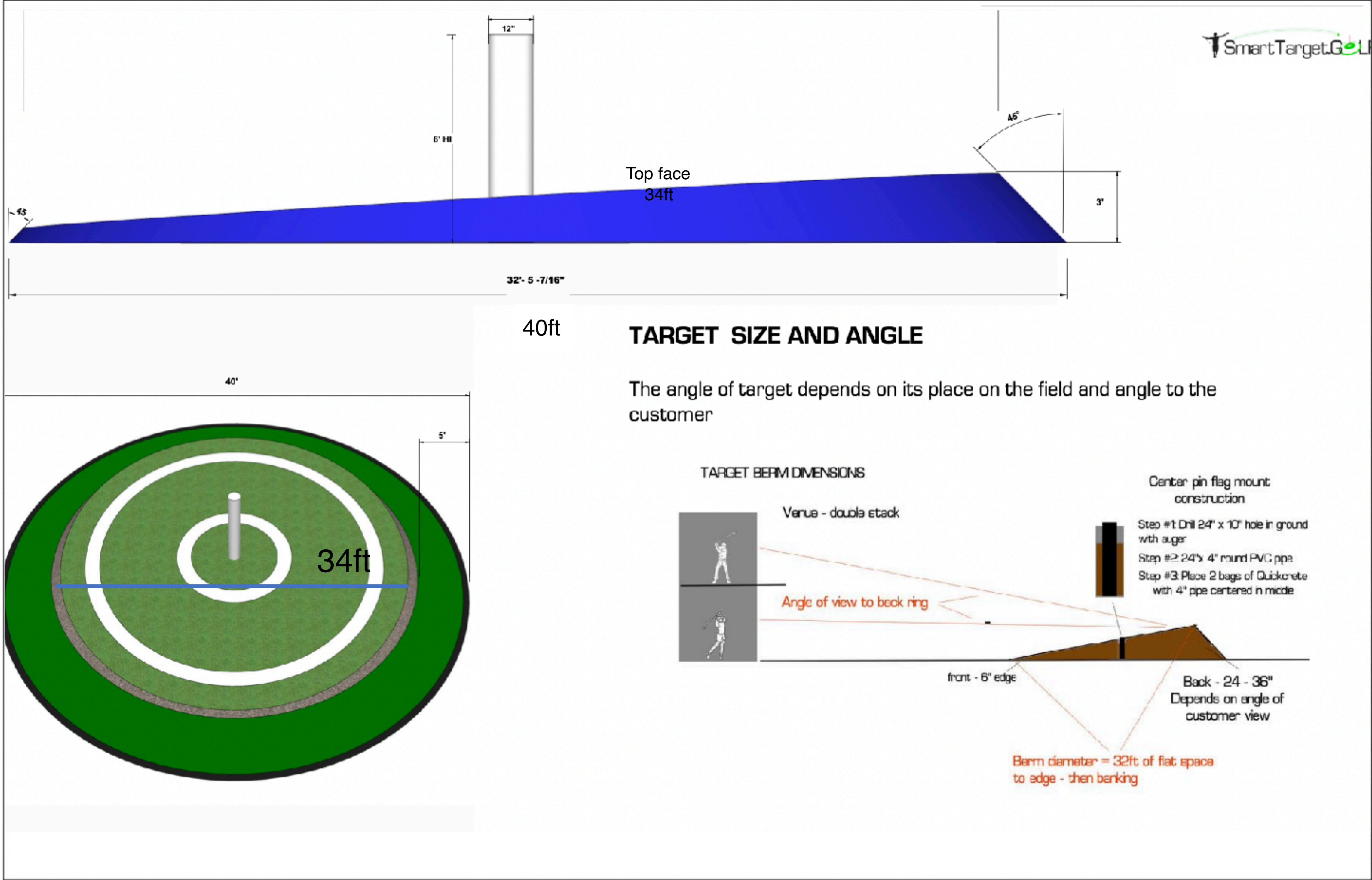
TWINWALL POLY TARGET



30 FOOT TARGET

TARGET CONSTRUCTION AND DESIGN

- EARTH BERM DESIGN -



Close to the ground and strong

Earth berm targets are designed to last indefinitely and withstand the worst conditions from heat in the summer to snow load in the winter.

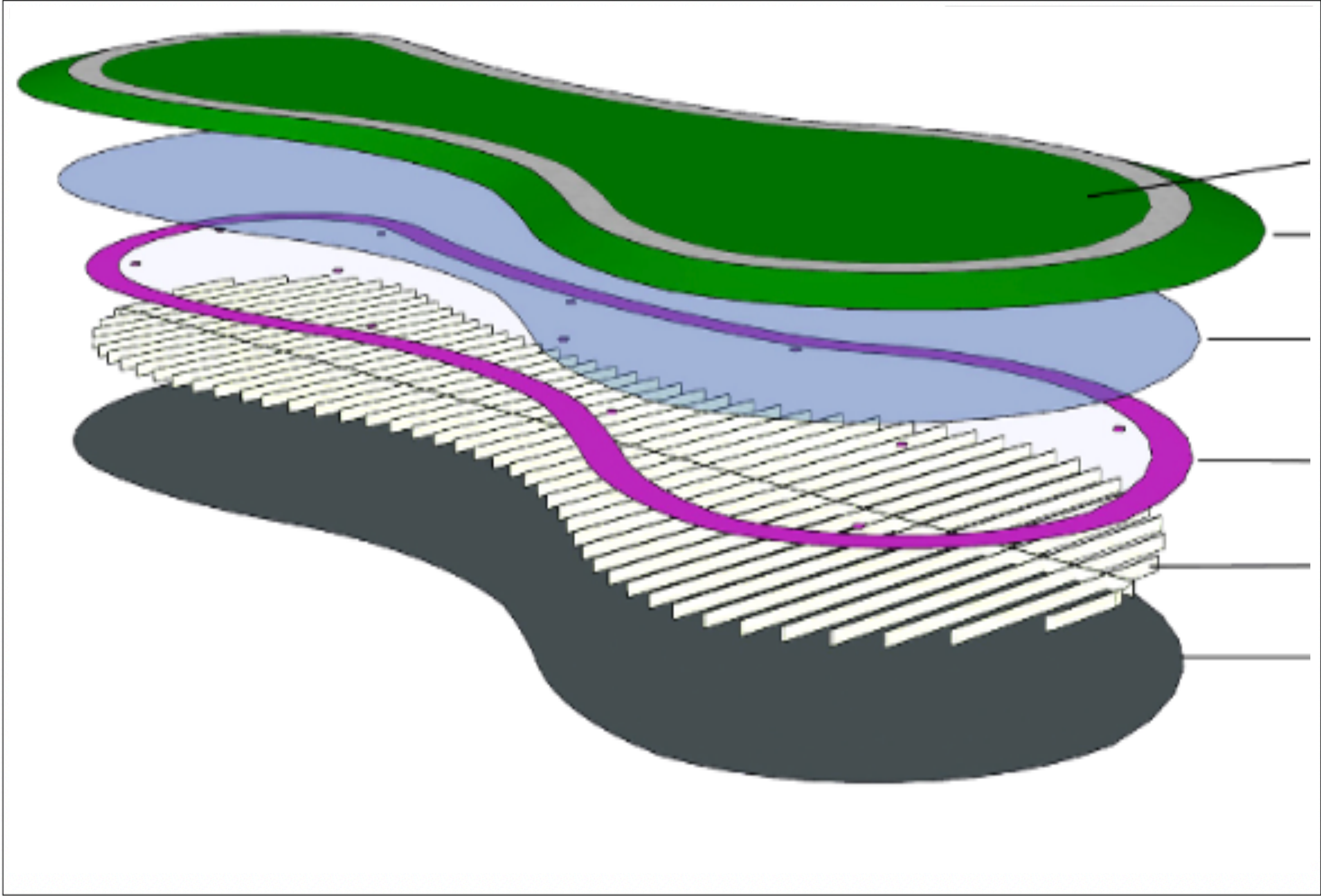
This design is employed when the venue has access to both soil and the machinery to build solid earth structures.

Targets set 8" off the ground and are accessed from above when there is a need for maintenance.

Smart target team laser levels all targets to determine angle for both the customer view and for water run off.



TARGET COMPONENTS



Smart Targets are made with a patented system that turns the entire target into a giant sensor. They are built to have single or multiple sensor zones as well as any custom shape of green.

By creating an 8" -14" sub floor, targets are able to be passively ventilated to create a dry space for all vital lighting and sensors.

- **VINYL/SYNTURF TOPSKIN** - With synturf, we are able to create a “green looking green”. More importantly turf eliminates needing to clean targets over time vs.vinyl

- **CLEAR POLYCARBONATE ROOF** - Polycarbonate is the wonder material that is both optical and ballistically strong so as to protect the target from impacts while creating the sound response that activates the targets

- **LIGHTS AND SENSORS** - Our light strips are IP68 with screw on connectors for easy maintenance, replacement and very low failure rate

- **SUB FLOOR** - By using 2x8” studs we are able to create a walkable ‘deck’ that allows for air to circulate and dry out the target in all conditions.

- **EARTH BARRIER** - By using a white earth barrier we optimize reflectivity in the light channels, while eliminating issues with moisture migration from the ground

30FT SMART TARGET

Ground preparation – Earth Berms



STEP 1 - GROUND WORK

Ground preparation is very important to creating a clean, uniform target

- Targets/greens embankments need to provide at least a 3 degree angle so that light rings will be visible to the customer
- Target berms are made to be 5ft larger on all sides than the target size. we do this so that once we install cinder block base, we use fringe material to fill up to the edge of the outside cinder block in preparation of putting in the targets fringe and forming out the edge.
- To create a properly flat target surface it is important to use a heavy roller to properly compact the berm, remove bumps and create even target face
- General target banking measurements - 6" off the ground in the front center, grading to 30" height at the back of the target



Sports Center of Connecticut - 33ft Diameter



Berm angle construction



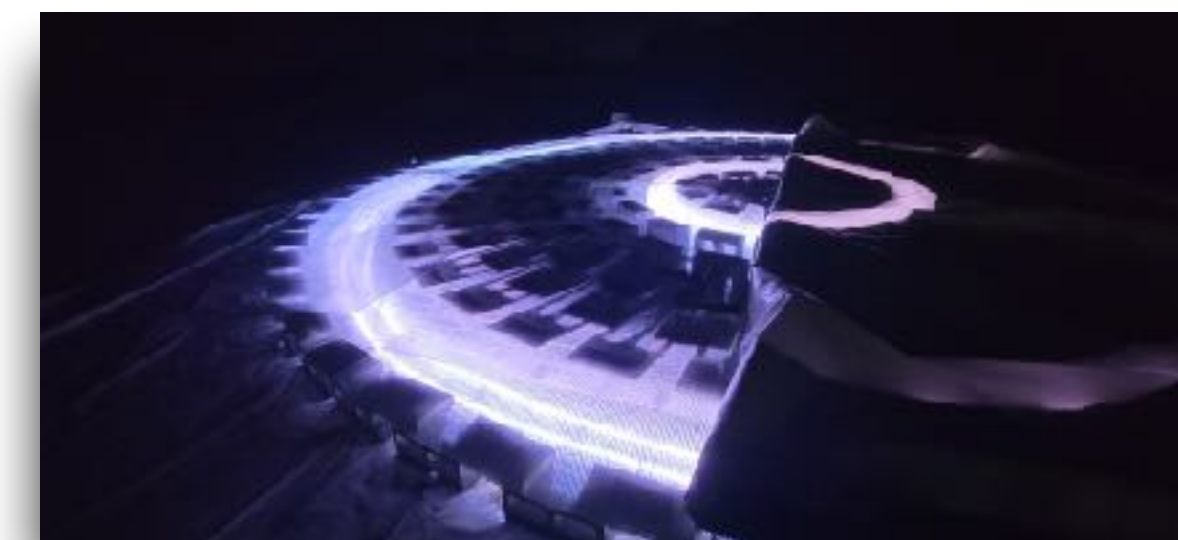
Base foundation and light channels



34ft Diameter



Ballistic layer



Light test with uncovered target

EARTHEN BERM DESIGN

Close to the ground
and strong

Earth berm targets are designed to last indefinitely and withstand the worst conditions from heat in the summer to snow load in the winter.

This design is employed when the venue has access to both soil and the machinery to build solid earth structures.

Smart target team laser levels all targets to determine angle for both the customer view and for water run off.

RECENT VENUE BUILDS

PINSEEKERS Madison, WI



OPENING SEPTEMBER, 2023



PINSEEKERS - Madison - May 23rd 2023

- Initial build before seeding and final ground work









PINSEEKERS

TIFFIN, IA
OPENING NOVEMBER 2023

PINSEEKERS Tiffin, IA









SOUTHERN DUNES

HAINES CITY, FL
OPENED JANUARY 2023

SOUTHERN DUNES - Haines City, FL



5 Target field with perimeter lighting of targets around fringe

Just outside of Orlando and nestled in the heart of Florida hurricane country, we designed this 5 target 'Christmas Tree' layout to be able to wow the customer while being aerodynamic enough to withstand the worst

This small field design of 5 30ft targets made with synthetic turf was designed to fit a 10 bay Toptracer range. With two new front targets, this is the perfect field size for small club or town



Stacked view designed to garner customer instagrams



The low profile 14" high frames design suits the potential high winds of Florida hurricanes

SOUTHERN DUNES - Haines City, FL



Steel frame construction creates open air interior for added reliability and access for maintenance



Hard shell polycarbonate serves as 'roof' for water, light transmission and protective shell against millions of golf ball impacts



Optical fringe with turf top creates a daytime appeal and bright evening impact

LAUNCHPAD

CALGARY, AB

LAUNCHPAD - Calgary AB

FIELD DESIGN needs to incorporate both day and night customer appeal along with an architecture that makes the field look good to every customer, no matter where they are hitting from.

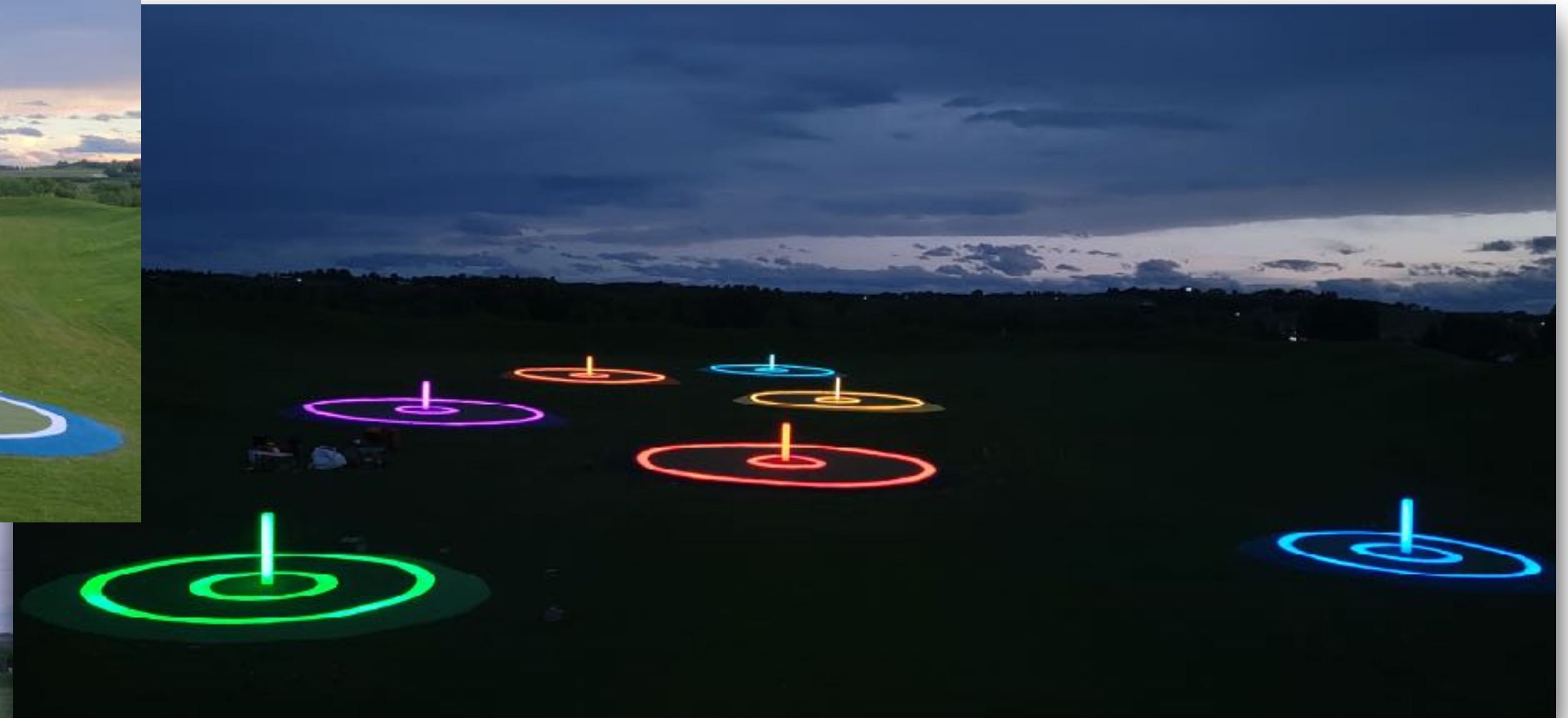
At Launchpad, we gave customers new and different experiences depending where they are hitting from.



LAUNCHPAD - Calgary AB



CENTER BAY VIEW



LAUNCHPAD - Calgary AB



GROUND & TARGET COMPLETION

TARGETS BERMS are angled toward the customer to make sure every bay can see every target completely.

The top skin is designed to be the rooftop to the target which protects the lighting and sensors from moisture and weather



**DAIRY CREEK
SWING TIME
SAN LUIS OBISPO, CA**

DAIRY CREEK - San Luis Obispo



OPENING UP THE NIGHT

DAIRY CREEK is where we burned in our permanent above ground targets. Why, because this range is simply a down hill pile of rocks with no soil to build earthen berms.

As our beta range we have replaced the targets three times in the quest to make a bulletproof target.

It turns out, our biggest enemy was the 75+ mph winds that sweep in from the west. From this we've created aerodynamic targets with passive ventilation and easy modular replacement of all component. Nothing short will survive the riggers of being in the field 24/7-365 days.



DAIRY CREEK - San Luis Obispo



We created a side hill frame of steel that has withstood top winds of 50mph to date



Downhill ranges pose a tough problem when making a visual target



View from behind the range looking up hill. A challenging angle for a driving range



SHOOTERS

WEXFORD, PA

SHOOTERS DRIVING RANGE - Wexford PA



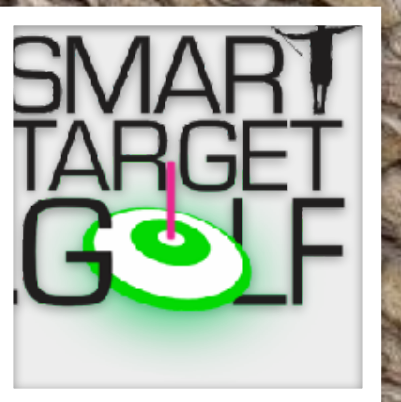


**HEARTLANDS
ELIZABETHTOWN, KY
OPENING SPRING 2024**

HEARTLANDS, Elizabethtown, KY



HEARTLANDS, Elizebethtown, KY





**1773 Stardust Plaza
Palm Springs, CA 92264
310.999.9767**

Robert Peterson
CEO
310-999-9757
rob@smarttarget.golf

Gwen Abel
West Coast Sales
800-203-9173
gwen@smarttarget.golf

James Kaiser
Sales Director
502-599-1777
sales@smarttarget.golf

TECHNOLOGY HAS MET POSSIBILITY

By creating the tech to make the driving range real, we're connecting the field with the player the opportunity to monetize any range, be it stand alone, green grass or public.

The technologies and the econo

THE FIELD IS THE FUTURE